

Sample report

Title of report

*A. B. Ivanov*¹, *V. G. Sidorov*²

¹IG Komi SC UB RAS, Syktyvkar; e-mail

²SPSU, Saint-Petersburg; e-mail

The title of a report, authors' surnames, titles of organizations are centered. Reporter's surname is underlined. The text should **not be longer than 2 pages of A4 format** (including tables and figures) with margins 2 cm from all sides. The text should be typed in Microsoft Word (*.doc, *.rtf). Font — Times New Roman, size — 12 points. Paragraph indentation for the first line — 1 cm, line spacing — 1.5, alignment — by width, without hyphenations. Symbols are from typeset Symbol, formulas are edited in Microsoft Equation. Text and table formatting, insertion and location of pictures are by means of MS Word. All objects should be scaled. References in the text are numbered in square brackets [1]. A list of the references is given after body text.

Each report should be sent in separate e-mail with attached files. The files should be named by contributor's surname, a number is added to the surname if necessary. The folder should include: Ivanov1-text.doc – text part of report; Ivanov1-tabl.doc – tables; Ivanov1-fig.doc – captions to figures; figures are in files Ivanov1-pic1 and so on. in bitmap or vector formats TIFF (pc), JPEG, EPS, CDR. Pictures in Word and Excel formats only are not subject to submission.

Printed copies should include tables and figures in the text.

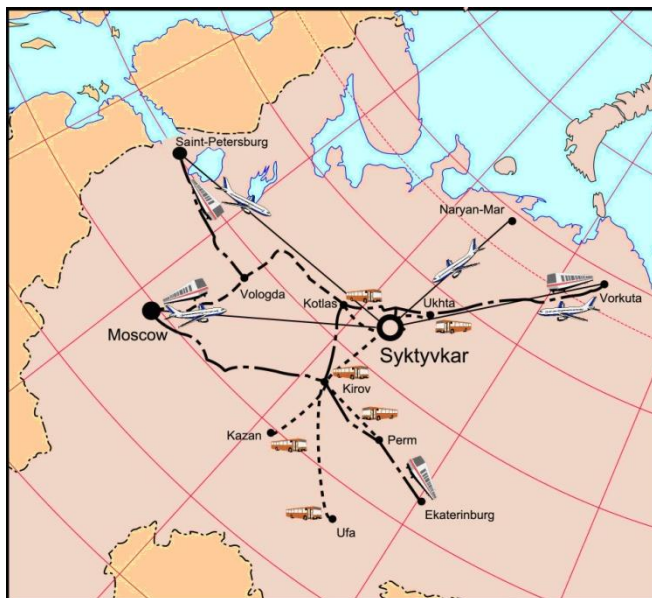
References

1. Ivanov I. I., Petrov P. P. Title of article // Title of journal. 2005. V. 00, № 00. P. 00—00.
2. Sidorov S. S. Title of monography. City: Publisher, 2005. 00 pp.
3. Alexandrov S. T. Title of abstract // Name of conference. City: Publisher, 2007. P. 00—00.



Travel

Syktyvkar is connected with large Russian cities by airlines. Time of flight from Moscow and Saint-Petersburg – 1 hour 40 min. Time of travel by train Moscow-Syktyvkar – 26 hours. Participants from Ural and Siberia can change to bus in Kirov (<http://www.syktyvkar.ru/>)



Russian Academy of Sciences

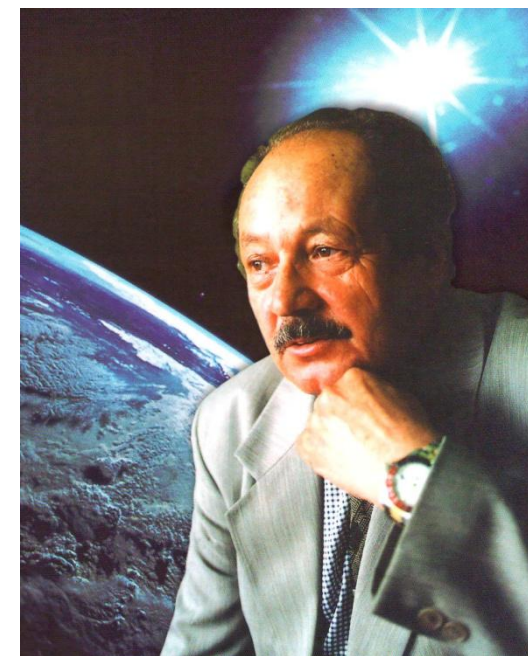
Federal Agency of Scientific
Organizations

Institute of Geology
Komi Science Center UB RAS

Russian Mineralogical Society

**MINERALOGICAL SEMINAR
WITH INTERNATIONAL PARTICIPATION**

**PROBLEMS AND PERSPECTIVES
OF MODERN MINERALOGY
(Yushkin Memorial Seminar–2014)**



Syktyvkar,
Komi Republic, Russia
May 19—22, 2014

Dear colleagues!

Institute of Geology of Komi Science Center of Russian Academy of Sciences and Russian Mineralogical Society invite you to take part in the Mineralogical Seminar with international participation dedicated to the memory of Academician N. P. Yushkin "Problems and perspectives of modern mineralogy (Yushkin Memorial Seminar-2014)" which will be held on May 19–22, 2014 in Syktyvkar.

Organizational Committee

Chairman

Prof. A. M. Askhabov, Academician of RAS

Co-chairmen:

Prof. S. L. Votyakov, Academician of RAS

Prof. Yu. B. Marin, Corr. Member of RAS

Deputy chairmen:

Prof. V. N. Anfilogov, Corr. Member of RAS

Prof. Yu. L. Voytekhovskiy

Prof. S. V. Krivovichev

Dr. G. N. Lysiuk

Science secretaries:

Dr. Ye. A. Golubev

Dr. O. V. Martirosyan

ADDRESS

Institute of Geology Komi SC UB RAS

Pervomayskaya st. 54, Syktyvkar,

Komi Republic, 167982, Russia

Phones:

+7 (8212) 245353 — Director Office

+7 (8212)245698 — Kozyreva Irina Vladimirovna

(Science Secretary of Institute of Geology)

+7 (8212) 203954 — Golubev Yevgeny Alexandrovich

(Organizational Committee)

Fax: +7 (8212) 240970; 245346

E-mail: min2014@geo.komisc.ru

Organizational Committee thankfully accepts financial and organizational support. Advertisement in a proceedings book is possible. Bank details will be sent on demand.

Scientific program

1. *History, philosophy and methodology of mineralogy.*
2. *Mineralogy of deposits. Topomineralogy.*
3. *Genetic mineralogy. Typomorphism of minerals and mineral associations. Genetic-information mineralogy*
4. *Mineralogical crystallography. Morphology and anatomy of crystals. Crystallogenesis.*
5. *Micro- nanodispersed state of mineral substance. Nanomineralogy.*
6. *Biom mineralogy. Organic minerals and biomineral interactions.*
7. *Experimental modeling of mineral formation processes.*
8. *Geomaterial science. Rational application of mineral resources.*

Reports submission

Reports are to be written in Russian or English according to rules, described in this letter, and submitted to the address of the Organizational Committee.

Reports should be ready for immediate printing and submitted to the Organizational Committee in printed and digital forms (digital form is necessary). Every participant can submit no more than 2 reports. Submitted materials will be published by the beginning of the Seminar.

Reports presentation: plenary (25 min), oral (15 min) and poster.

A contributor can suggest a new section within the program. Inclusion of such a section will be discussed by the Organizational Committee.

The Organizational Committee has the right to exclude materials that are not corresponding to the themes of the conference and presentation rules.

Deadlines

Registration forms and reports submission	25 March 2014
Program mailing	25 April 2014
Registration of participants	19 May 2014
Seminar opening	20 May 2014

Registration form

Surname _____

Name _____

Middle name _____

Position _____

Science degree _____

Organization _____

Fax _____

Phone _____

E-mail _____

Title of report 1 _____

Number of scientific program section _____

Report form

oral

poster

Title of report 2 _____

Number of scientific program section _____

Report form

oral

poster

Participation:

Attending

very possible

possible

problematic

Correspondence participation